







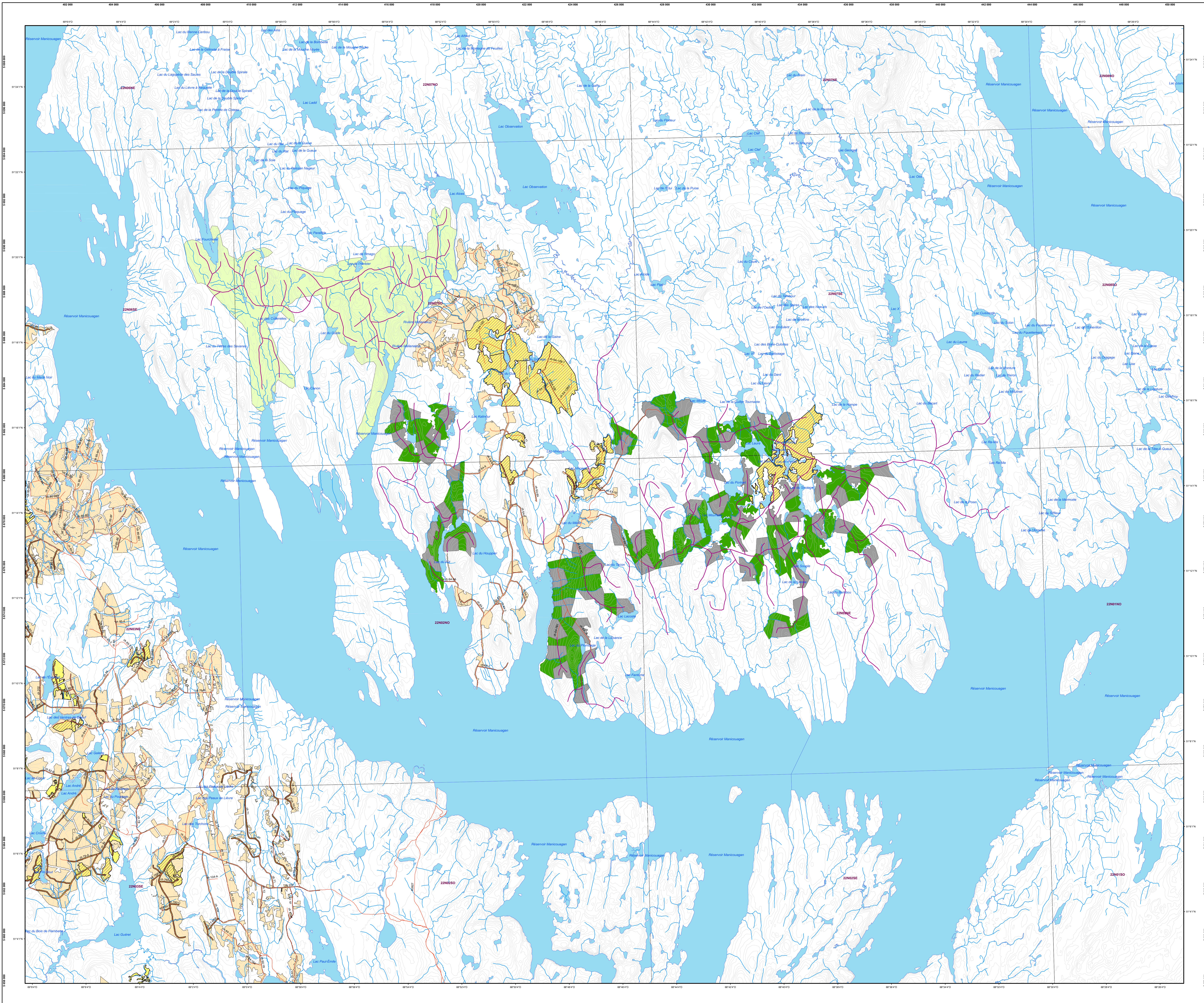
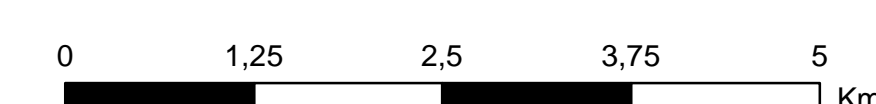


Légende

-  Chemin existant
-  Chemin planifié
-  Coupe forestière planifiée
-  Forêt résiduelle planifiée
-  Plantation et regarni planifiés
-  Préparation de terrain planifiée
-  Coupe antérieure
-  Plan spécial (récolte dans le feu)



Projection cartographique : NAD, 1983, MTM, 7
 Date d'impression : 8 juin 2006



0 1.25 2.5 3.75 5
 1:50000 Km